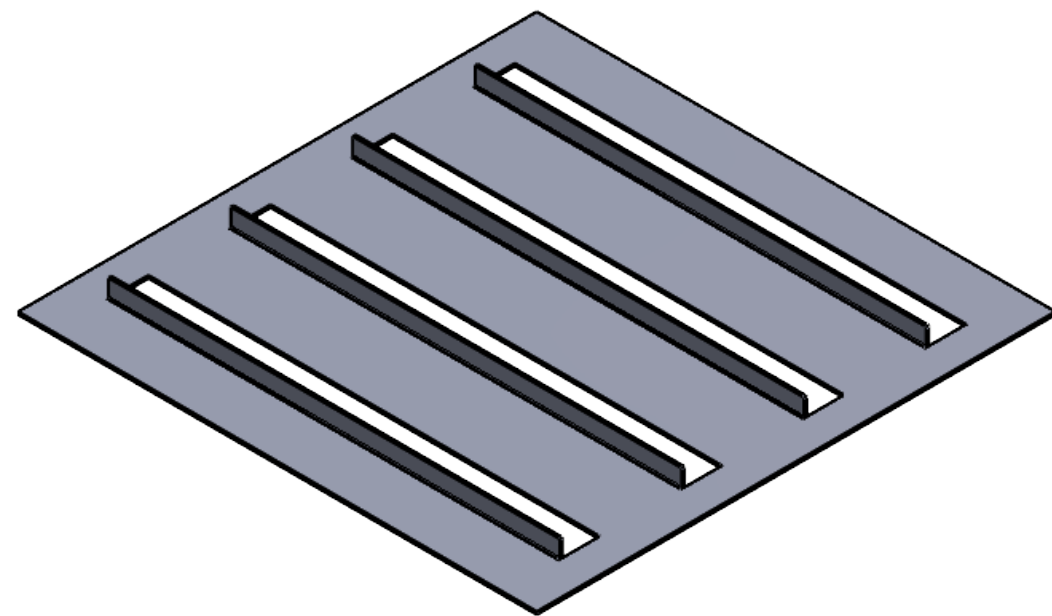
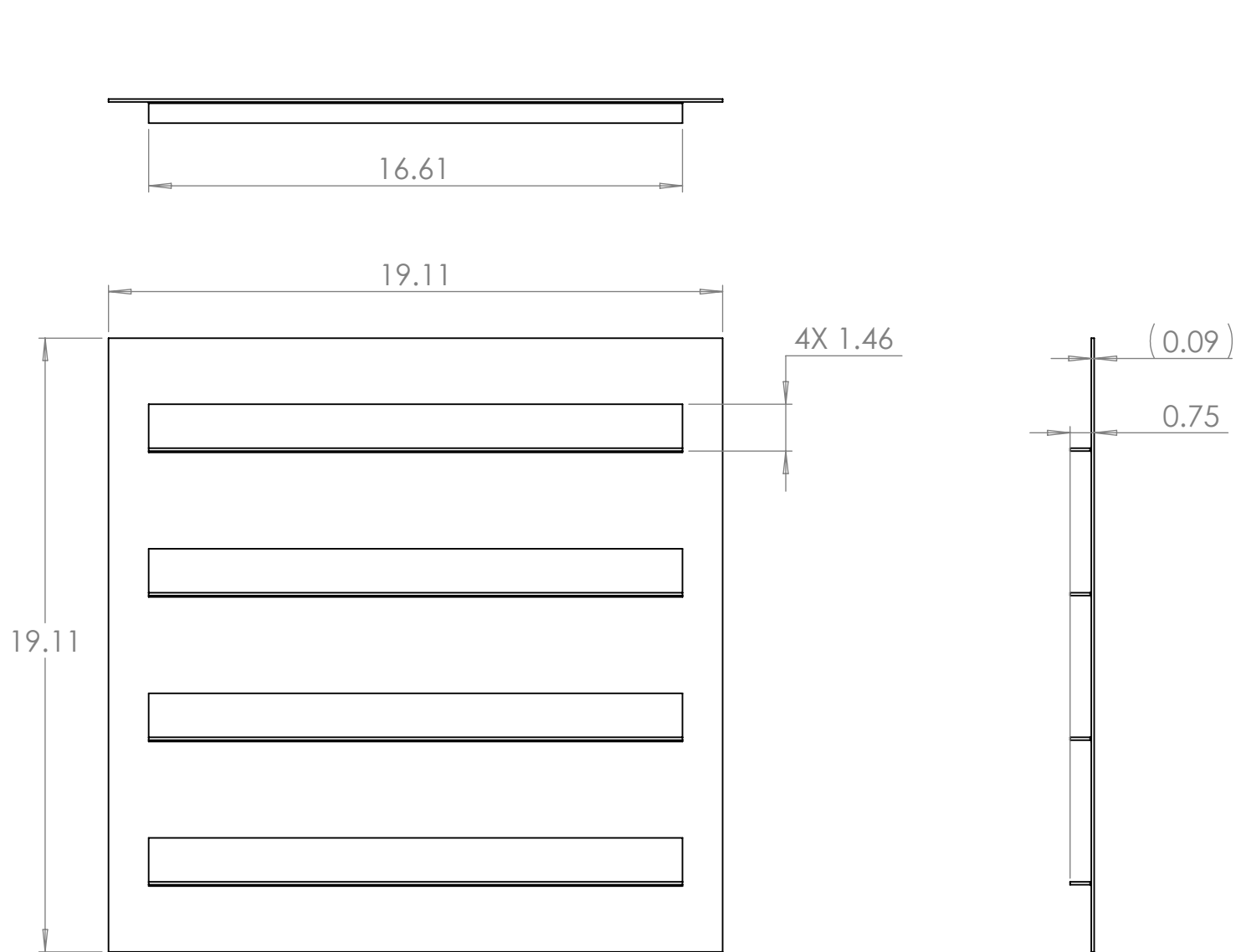


B

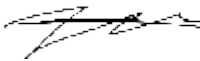


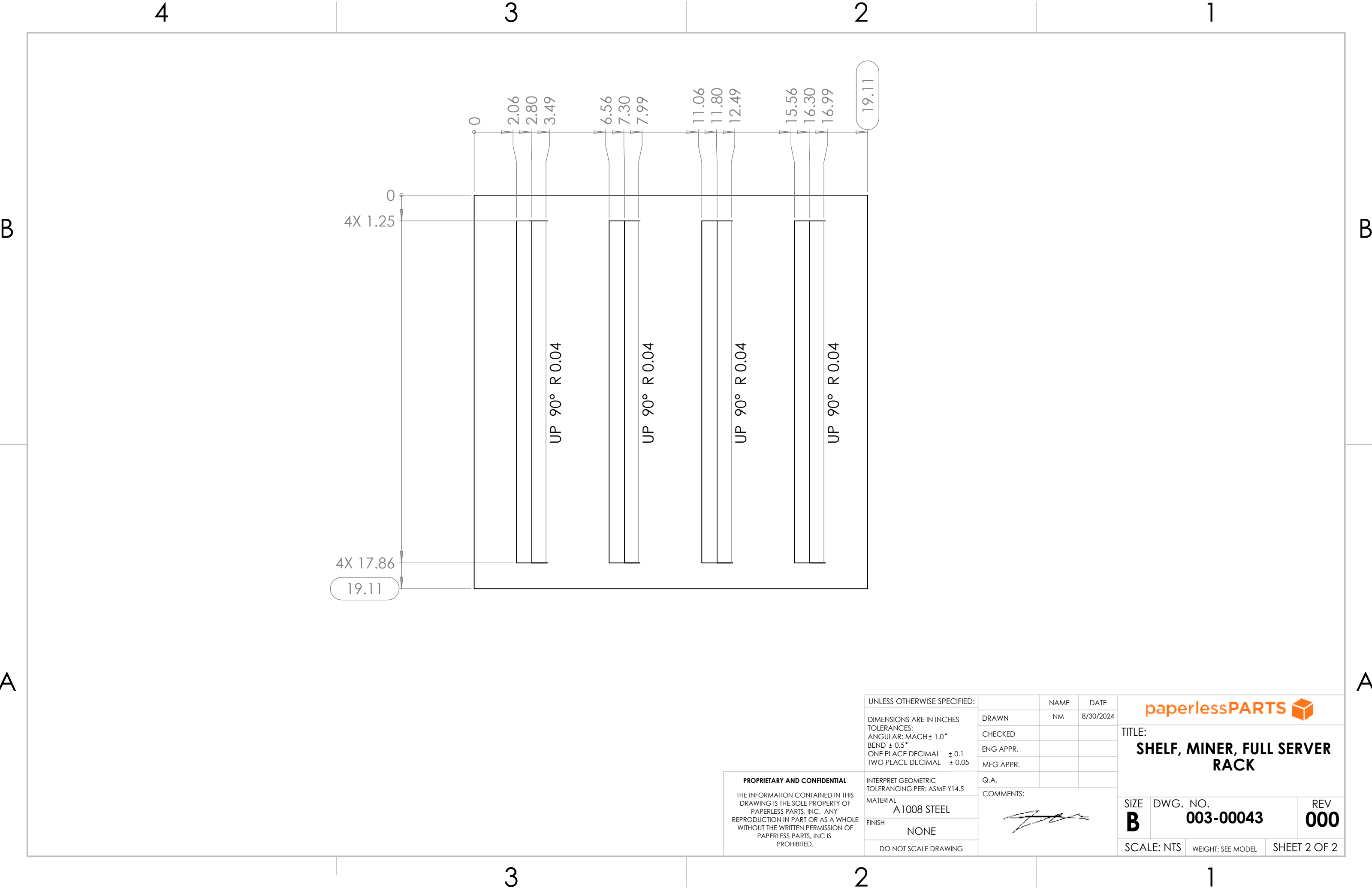
B

A

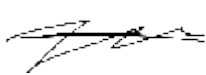
- NOTES: UNLESS OTHERWISE SPECIFIED.
1. PARAMETRIC MODEL. ALL DIMENSIONS FURTHER SPECIFIED IN 003-00043.
 2. FLAT PATTERN FOR PART SPECIFIED ON LAST SHEET OF DRAWING.
 3. PART SHALL BE FREE OF ANY SHARP EDGES AND BURRS.
 4. PART TO BE CLEANED OF ALL OIL AND DEBRIS.
 5. MATERIAL: A1008 STEEL
 6. FINISH: NONE
 7. GAUGE: 13
 8. PART SHALL NOT BE MODIFIED BY ANY PARTY OUTSIDE PAPERLESS PARTS, INC UNLESS WRITTEN OR EXPRESS APPROVAL HAS BEEN PERMITTED FOR THE PART.

A

<div>PROPRIETARY AND CONFIDENTIAL</div> <div>THE INFORMATION CONTAINED IN THIS DRAWING IS THE SOLE PROPERTY OF PAPERLESS PARTS, INC.. ANY REPRODUCTION IN PART OR AS A WHOLE WITHOUT THE WRITTEN PERMISSION OF PAPERLESS PARTS, INC IS PROHIBITED.</div>	UNLESS OTHERWISE SPECIFIED:	NAME	DATE	<div><div>paperlessPARTS</div><div>TITLE: SHELF, MINER, FULL SERVER RACK</div></div>		
	DIMENSIONS ARE IN INCHES TOLERANCES: ANGULAR: MACH ± 1.0° BEND ± 0.5° ONE PLACE DECIMAL ± 0.1 TWO PLACE DECIMAL ± 0.05	DRAWN	NM			
		CHECKED				
		ENG APPR.				
		MFG APPR.				
		Q.A.				
		COMMENTS:				
INTERPRET GEOMETRIC TOLERANCING PER: ASME Y14.5		SIZE		DWG. NO.	REV	
MATERIAL		B	003-00043	000		
A1008 STEEL						
FINISH						
NONE	SCALE: NTS		WEIGHT: SEE MODEL	SHEET 1 OF 2		
DO NOT SCALE DRAWING						



PROPRIETARY AND CONFIDENTIAL
THE INFORMATION CONTAINED IN THIS
DRAWING IS THE SOLE PROPERTY OF
PAPERLESS PARTS, INC. ANY
REPRODUCTION IN PART OR AS A WHOLE
WITHOUT THE WRITTEN PERMISSION OF
PAPERLESS PARTS, INC IS
PROHIBITED.

UNLESS OTHERWISE SPECIFIED:		
DIMENSIONS ARE IN INCHES TOLERANCES: ANGULAR: MACH± 1.0° BEND ± 0.5° ONE PLACE DECIMAL ± 0.1 TWO PLACE DECIMAL ± 0.05	DRAWN	NAME NM DATE 8/30/2024
	CHECKED	
	ENG APPR.	
	MFG APPR.	
	Q.A.	
INTERPRET GEOMETRIC TOLERANCING PER: ASME Y14.5		
MATERIAL A1008 STEEL		
FINISH NONE		
DO NOT SCALE DRAWING		

		
TITLE: SHELF, MINER, FULL SERVER RACK		
SIZE B	DWG. NO. 003-00043	REV 000
SCALE: NTS	WEIGHT: SEE MODEL	SHEET 2 OF 2